

brandenburg Cables and Connectors

ORDERING INFORMATION

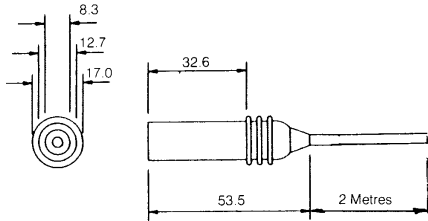
Type	Description	Voltage (Max)	Outside Diameter	CSA (sqmm)	Mean Core	Max Temp	Order Code (Colour)
CAB18	Polyethene Dielectric + PVC Sheeth	18kV	3.7mm	0.409sq	14/0.19mm	85C	CAB090000 (Red)
	Irradiated high density polyethylene	20kV	3.2mm	0.52sq	7/0.26mm	105C	356F51220004 (Red)
CAB30	Polyethene Dielectric + PVC Sheeth	30kV	3.048mm	0.456sq	7/30swg	85C	356F51999971 (Red) 356F51999970 (Black)
CAB40	Irradiated high density polyethylene	40kV	4.75mm	0.52sq	7/0.26mm	105C	356F51999973 (Red)
CAB40	Irradiated Halocarbon	40kV	4.20mm	0.52sq	7/0.26mm	105C	CAB145-020S (Red)
	Irradiated high density polyethylene	50kV	5.20mm	0.52sq	7/0.26mm	105C	CAB146-020S (Red)
CAB60	PVC Jacket EP Rubber Dielectric+ Cu Screen	60kV	11.2mm	2.0sq	37/0.26mm	70C	364F51000002 (Grey)

Series	Description	Voltage	Lead Type	Lead Length	Order Code
Type 76	In-line plug +lead (red)	15kV	356F51220004	2m	MOL020-76
Type 70B	In-line socket +lead (red)	15kV	356F51220004	2m	MOL020-70B
Type 74B	Panel socket +lead (red)	15kV	356F51220004	2m	MOL020-74B
Type 133	Panel socket (red)	15kV	21AWG Tn/Cu	0.1m	MOL020-133
Type 37	In-line Plug+lead (red)	30kV	356F51999973	2m	MOL020-37/P
Type 37	Panel socket+lead (red)	30kV	356F51999973	0.5m	MOL020-37/S
Type 102	In-line connector	30kV	N/A	N/A	BB-1586-01
	Silicon rubber lead-out for use with 3.0mm OD cable (For use with BB1586-01)				R1018A
	Silicon rubber lead-out for use with 6.0mm OD cable (For use with BB1586-01)				R1018B
	Silicon rubber lead-out for use with 7.0mm OD cable (For use with BB1586-01)				R1018C
	Silicon rubber lead-out for use with 4.7mm OD cable (For use with BB1586-01)				R1018D

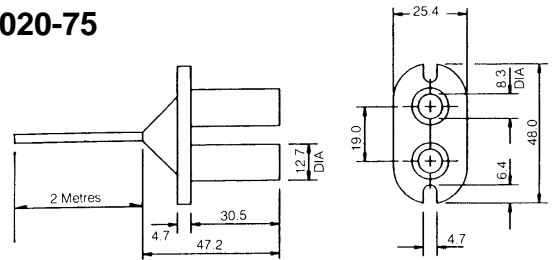


DRAWINGS

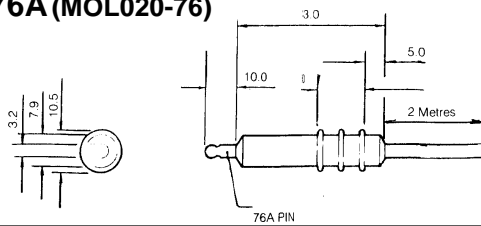
Type 70B (MOL020-70B)



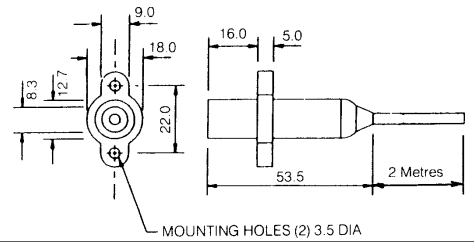
MOL020-75



Type 76A (MOL020-76)

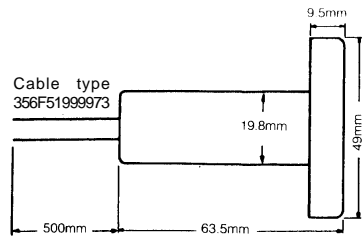


Type 74B (MOL020-74B)

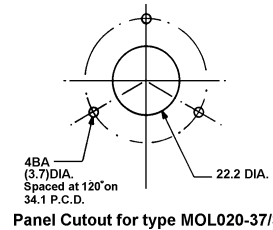
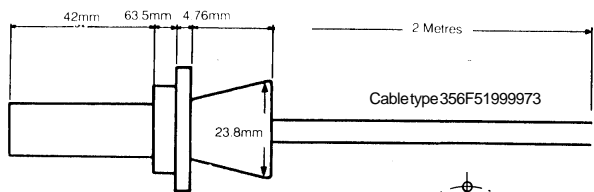


MOL020-37/S

NB: Socket radial clearance zone (to the nearest conductive point), minimum 38mm, central to the cable point of exit

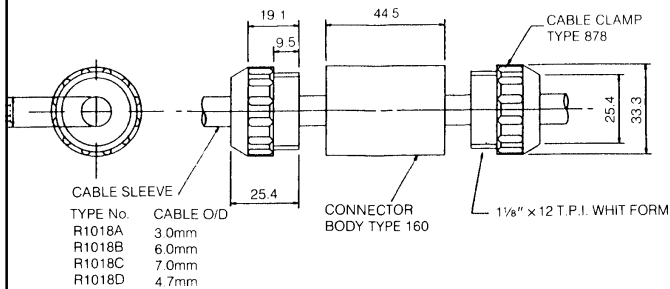


MOL020-37/P



CONNECTORS & CABLES

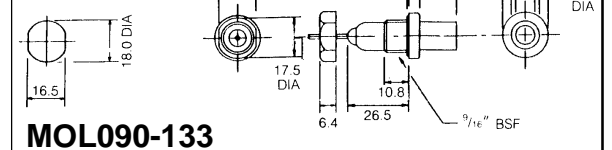
BB-1586-01



TYPE No.	CABLE O/D
R1018A	3.0mm
R1018B	6.0mm
R1018C	7.0mm
R1018D	4.7mm

NB: The silicon rubber lead-outs are supplied separately, see ordering information.

PANEL CUTOUT



MOL090-133